

AIE

ARIZONA INTERNATIONAL EDUCATORS NEWSLETTER

[WWW.ARIZONAIE.ORG](http://www.arizonaie.org)

Volume 2, Issue 1, February 2014



COME JOIN US!

AIE annual State Meeting – March 7, 2014

at Embry Riddle Aeronautical University in Prescott, Arizona

This year's theme: *Where in the World Are We?*

To register visit: www.arizonaie.org/annual-meeting/

Inside This Newsletter:

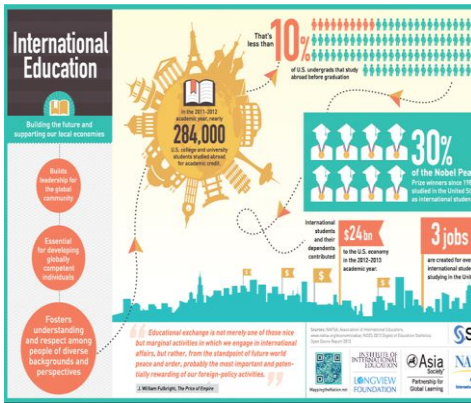
- Mapping The Nation: Linking Local to Global
- State Meeting Registration Directions
- Join AIE Today!
- AIE Guidelines Proposed Changes
- AIE Website
- AIE Members
- AIE Field Advocates

Each year in the spring, Arizona international educators meet to exchange ideas, share information, teach one another and learn from one another about the latest trends and innovations in the field of international education at the annual Arizona International Educators (AIE) State Meeting. This year's day-long event will be on March 7, 2014 at Embry-Riddle Aeronautical University in Prescott, Arizona. The theme is "Where in the World Are We?"

The program will highlight an exciting new resource called *Mapping the Nation: Linking Local to Global*. You can see the map at www.mappingthenation.net. Key indicators on the map show data, state-by-state, for economic, educational and demographic global connections. This resource was developed by the Asia Society and the Longview Foundation in cooperation with SAS. Heather Singmaster, Asia Society project coordinator, will review and demonstrate how the map can support efforts to enhance international education in our schools. Following the map demonstration, a panel of individuals who are knowledgeable about the global connections in Arizona will present more expanded information about Arizona's global footprints.

The State Meeting program, will include presentations in breakout sessions on topics of current interest, including immigration topics (DACA in particular), Healthcare reform and its impact on international education, study abroad and service learning, and trends in new and innovative global partnerships in international education. So, come join us and register at:

<http://arizonaie.org/annual-meeting/>



<http://mappingthenation.net/>

MAPPING THE NATION: HOW GLOBAL IS ARIZONA?

Check out this map about International Education and visit their website to see what other states are doing. Twenty-five states have grassroots initiatives and/or policy supporting global learning. A practical way to get started is to gather policy, business, education, and community stakeholders. With stakeholder perspectives and involvement, make a plan for statewide reform. Tools to help • Learn more about global competence. • Use Mapping the Nation’s toolkit to get started. • Asia Society’s website features several planning and advocacy tools, along with resource lists and model programs. • Connect with other states’ initiatives for ideas and models. - See more at: <http://mappingthenation.net/>

AIE Membership Enrollment: JOIN TODAY!

BIG NEWS!.....In the last year, AIE has taken a big step into the future. We’ve registered our name with the Arizona Secretary of State’s office, set up a bank account, developed organizational guidelines, established a leadership team that includes a roster of officers, and have become a structured organization. The best part of this is that membership in AIE is totally FREE! We hope you will sign up as a member, because that will ensure you receive all the announcements and notices about AIE activities, including information about the annual State Meeting. To enroll as a member go to the new AIE website at arizonaie.org and fill in the membership form. AIE membership allows you voting privileges in all matters for governing and directing the organization.

AIE Guidelines Proposed Changes

The *AIE Guidelines*, the official documented policy statement that guides the operations and processes of AIE, continues to evolve as organizational needs are revealed. Two changes were proposed in late fall 2013 and approved by the AIE membership. The proposed changes were emailed for action to only AIE official members, who, according to the Guidelines, have voting privilege. The changes will be reviewed and discussed at the annual AIE State Meeting on March 7, 2014. You can see the approved changes and the latest version of the AIE Guidelines on AIE’s official website at arizonaie.org.

AIE Website

AIE has a new website. It’s totally owned by AIE, independent of ties to any other hosting organization. Go to arizonaie.org to browse through it and see the handiwork of our new webmaster, Jeffrey Banner, who rebuilt the site and is charged with the responsibility for managing and maintaining this resource linking us together. We are grateful to NAU for hosting the AIE website for the last several years, and we are excited that our new website now operates and functions independently to serve as a communication tool for the AIE membership. Thanks Cathy Ribic for shepherding us through the transition to the new site, and prior to that, as caretaker of the AIE website and as AIE’s liaison to NAU.

To post items on the AIE website, contact AIE president MaryLee Carter.

AIE Field Advocates and Contact Information

Field Advocates (FA) are the movers and shakers who guide AIE professional development activities. The AIE network is made up of professional educators from all over Arizona who represent the various interests and concerns of the many different factions of international education. The Field Advocate position was established to ensure that all AIE voices are heard, and that all interests are fostered in professional development activities sponsored by AIE, in particular the annual

State Meeting. The list of Field Advocates is by no means complete. Any AIE member who wants to foster a topic, issue or area of concern can be a Field Advocate. (Contact one of the AIE officers to let them know of your interest.) Or you can join with one of the FAs (see listed below) who are working to promote their professional interests and issues.

Field Advocate	Area of Interest
Jeffrey Banner Assistant Director Academic Services, CLAS, ASU jeffrey.banner@asu.edu 480-965-4362	Webmaster Records Storage
Mark Hough HTH World Wide Insurance Services mhough@hthworldwide.com 480-483-5640 (Office) 480-861-1303 (mobile)	General Health, Safety & Insurance Health Care Reform
Angela Miller Assistant Director, Center for International Education, NAU A.Miller@NAU.edu 928-523-2400	Study Abroad
DeeAnn Resk Office of Student Life & Leadership, Prescott College dresk@prescott.edu 928-350-1007	Community Engagement & Advocacy Civic Engagement Service Learning
Michelle Medved Director for Mandarin Chinese Project, Deer Valley Unified School District Michelle.medved@dvusd.org 623-256-1483	K-12 International Education. Foreign Languages Development. Chinese Language Projects.

AIE Officers and Contact Information

Contact anyone on the AIE Leadership Team to submit ideas and suggestions, offer your expertise and assistance, or seek information about all AIE concerns and issues.

MaryLee Carter, President (2013-2015)

mcarter01@cox.net; 623-847-3555

President, International Student & Scholar Resources

Cathy Ribic, Director at Large (2013-2014); Arizona Representative to NAFSA Region II (2013)

Catherine.Ribic@nau.edu; 928-523-4199

Director International Student and Scholar Services, NAU

Ken Bus, Treasurer (2013-2016); Arizona Representative to NAFSA Region II (2014)

ken.bus@gccaz.edu; 623-845-3136

Director International Education, Glendale Community College

Kathy Bunch, Director at Large (2013-2016)

KBUNCH@FCLAW.com; 602-916-5716

Immigration Paralegal, Fennemore Craig, PC

Kimberly Large, Secretary (2013-2016)

Kimberly.Large@phoenix.edu; 602-557-6271

Principal Designated School Official/SEVP, University of Phoenix

Debi Parris, Director at Large (2013-2016)

parrisd3@erau.edu; 928-777-3410

Associate Director, International Student Advisor, ERAU